



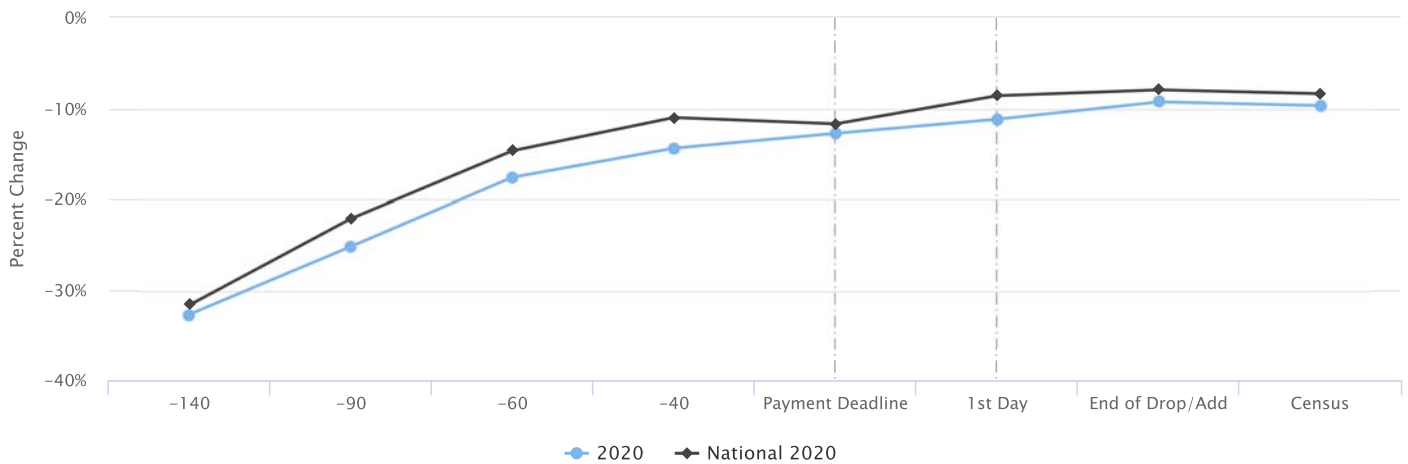
Executive Report for Dr. Tony Miksa

WALTERS STATE COMMUNITY COLLEGE

Key National Benchmarks – Where Does Your Institution Stand?

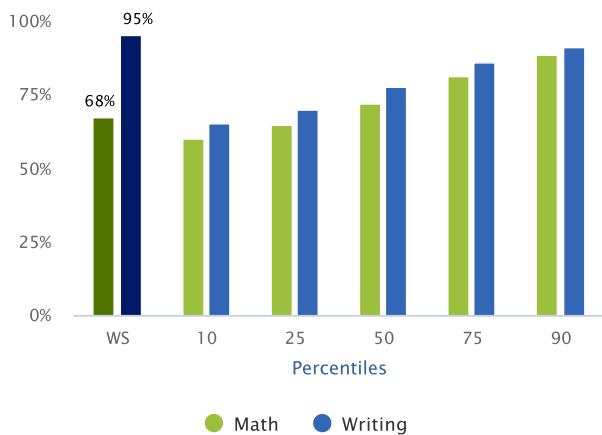
Thank you for participating in the National Community College Benchmark Project in 2019. This year’s report selects a few key data for your institution compared to the national benchmarks, including newly added data showing your Fall 2019 enrollment against national trends. The full NCCBP report, available online, contains more than 150 additional benchmarks, which are collectively intended to support your planning, assessment, peer comparisons and strategic decision-making activities.

Enrolled Student Credit Hours (SCH) by Days from Census – Percent Change

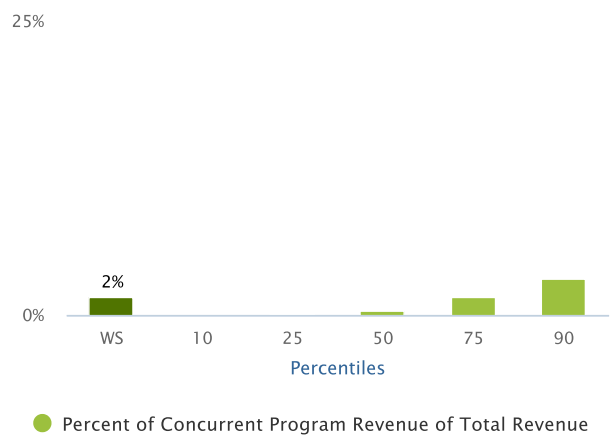


The percentage change of student credit hours between Fall 2019 enrollment compared to Fall 2020 enrollment over the period of 140 days prior to and throughout until the college’s census day.

Developmental Completer Success Rate



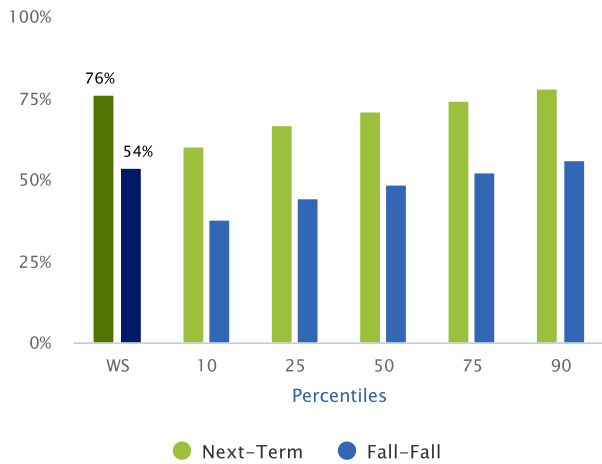
Percent of Concurrent Program Revenue of Total Institution Revenue



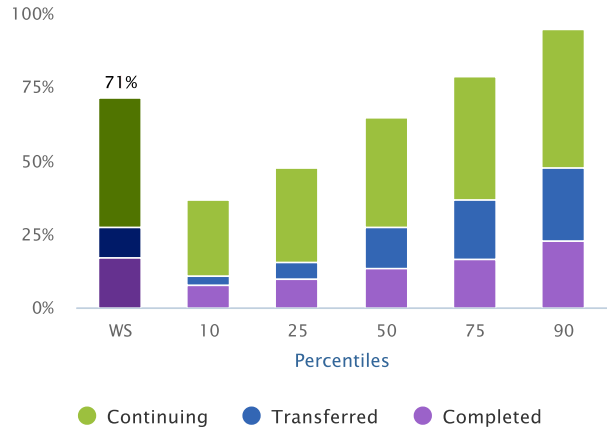
The percent of students, institution-wide, who received grades of A, B, C, or Pass in developmental/remedial math and writing courses in Fall 2018.

The percentage of concurrent high school program revenue from Fall 2018 of total revenue from Fiscal Year 2019.

### Persistence Rate



### Student Completions/Transfers/Continuing



The persistence rate is the percent of Fall 2018 credit students, both full- and part-time, who return to the campus for the next term (usually Spring 2019), or for the next Fall term (Fall 2019). This metric excludes students who graduated or completed certificates in the time frame.

Percent of all students in an academic year who complete, transferred or continue at the college the following year.

### Strengths

The following benchmarks are where your community college performed at its best. The benchmark is followed by the percent rank for your institution.

- Credit Momentum Rate - 12 credits in 1 semester  
**Your Rank - 98<sup>th</sup> Percentile**
- Credit Momentum Rate - 15 credits in 1st year  
**Your Rank - 98<sup>th</sup> Percentile**
- % of Employers Satisfied with Career Program Completers Preparation  
**Your Rank - 97<sup>th</sup> Percentile**
- Credit Momentum Rate - 24 credits in 1st year  
**Your Rank - 97<sup>th</sup> Percentile**
- Return on Net Assets Ratio  
**Your Rank - 97<sup>th</sup> Percentile**

### Opportunities for Improvement

The following benchmarks are where your community college may need improvement. The benchmark is followed by the percent rank for your institution.

- Training Expenditures per FTE Employee  
**Your Rank - 1<sup>st</sup> Percentile**
- % of Full-Time, First-Time Students that Transferred in Six Years  
**Your Rank - 2<sup>nd</sup> Percentile**
- % of Full-Time, First-Time Students that Transferred in Three Years  
**Your Rank - 4<sup>th</sup> Percentile**
- % of Full-Time, First-Time Students that Completed or Transferred in Six Years  
**Your Rank - 6<sup>th</sup> Percentile**

### More Information

Find more information on the NCCBP by visiting our website **NCCBP.org** or by calling or emailing the Benchmark Institute.

Johnson County Community College  
12345 College Blvd.  
Overland Park, KS 66210  
913-469-3831  
E-mail: [michelletaylor@jccc.edu](mailto:michelletaylor@jccc.edu)  
Twitter: [@EdBenchmark](https://twitter.com/EdBenchmark)

