

WALTERS STATE COMMUNITY COLLEGE

Key National Benchmarks – Where Does Your Institution Stand?

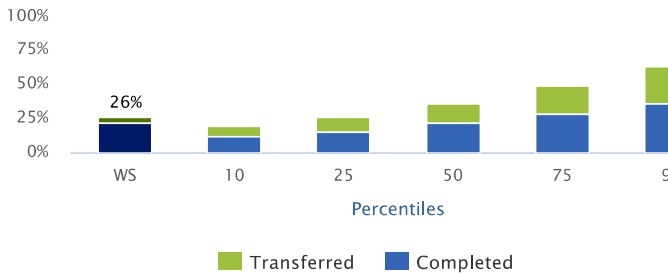
Your college participated in the National Community College Benchmark Project in 2016. This research is conducted annually by The National Higher Education Benchmarking Institute (NHEBI). We would like to share some of the key results of this study with you. The report illustrates how your college compared to national data, representing 251 community colleges.

The full NCCBP report, available online, contains more than 150 benchmarks on student demographics, measures of student success, faculty and staff data, workforce and community outreach, and institutional characteristics and effectiveness metrics.

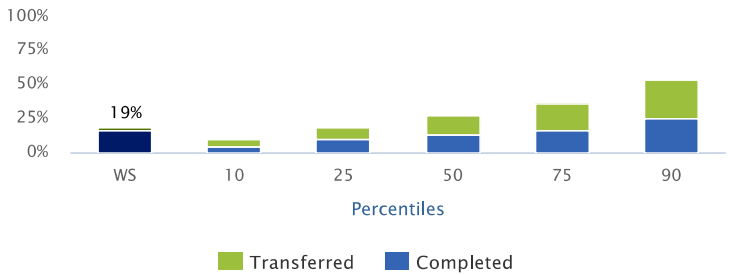
Member colleges use the benchmarks to support:

- Strategic planning and selection of KPIs
- Accreditation
- Internal and external accountability activities
- Institutional transparency
- Documentation of student success

Full-time Students Completed or Transferred in Three Years



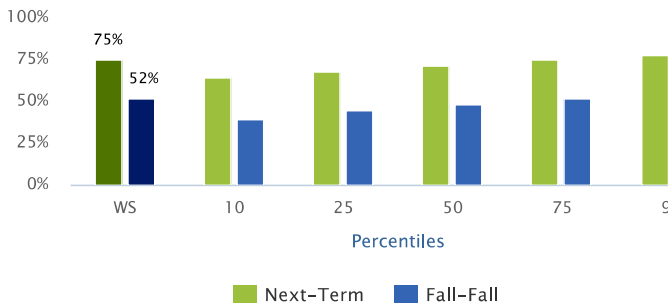
Part-time Students Completed or Transferred in Six Years



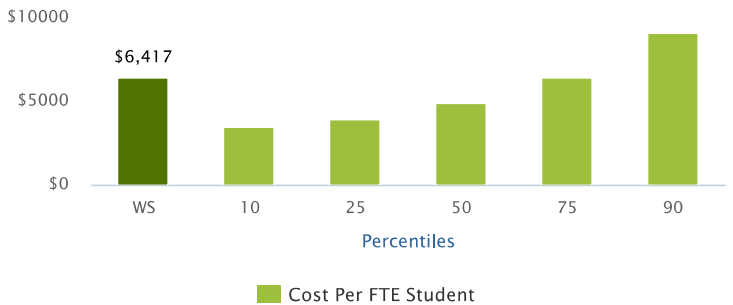
The percent of students out of the unduplicated full-time, first-time, credit headcount from Fall 2012 IPEDS GRS cohort who either completed a degree or certificate before fall 2015 or who transferred to four-year institutions before fall 2015.

The percent of part-time students out of the unduplicated part-time, first-time, credit headcount from Fall 2010 IPEDS GRS cohort who either completed a degree or certificate before fall 2015 or who transferred to four-year institutions before fall 2015.

Persistence Rate



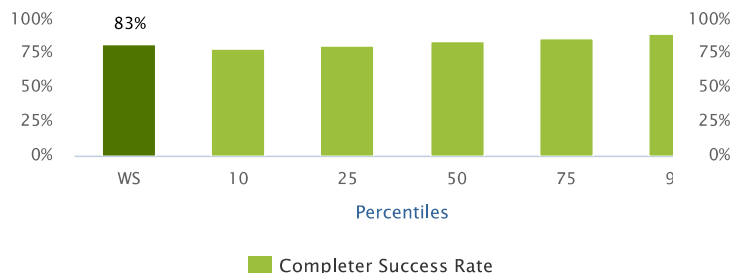
Instructional Cost per FTE Student



The persistence rate is the percent of Fall 2014 credit students, both full- and part-time, who return to the campus for the next term (usually Spring 2015), or for the next fall term (Fall 2015). This metric excludes students who graduated or completed certificates in the time frame.

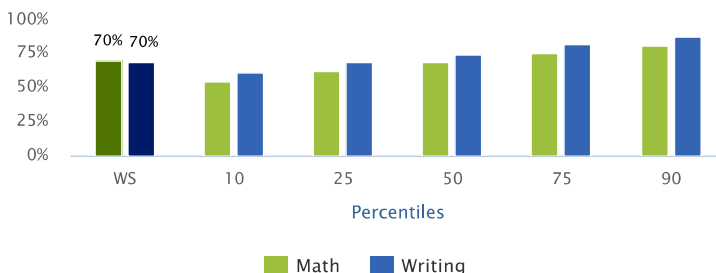
2015 instructional costs include salaries, benefits, supplies, travel and equipment for all full- and part-time faculty and other instructional administration and support personnel per full-time equivalent student.

College-level Courses: Completer Success Rate



The percent of students, institution-wide, who received grades of A, B, C, or Pass in college-level credit courses in fall 2014.

Developmental Completer Success Rate



The percent of students, institution-wide, who received grades of A, B, C, or Pass in developmental/remedial math and writing courses in fall 2014.

Strengths

The following benchmarks are where your community college performed at its best. The benchmark is followed by the percent rank for your institution.

1. % of Students that Completed a Career Program and are Employed in Related Field
Your Rank - 98th Percentile
2. Cumulative First-year GPA of Students that Transferred to a Four-Year Institution
Your Rank - 94th Percentile
3. % of Graduates and Completers that Achieved their Educational Goal
Your Rank - 91st Percentile
4. CCSSE Student Effort Benchmark Means
Your Rank - 84th Percentile

Opportunities for Improvement

The following benchmarks are where your community college may need improvement. The benchmark is followed by the percent rank for your institution.

1. Ratio of Minority Student taking Credit Class of the Minority Population of the Service Area
Your Rank - <1st Percentile
2. % Part-Time, First-Time Students that Transferred in Six Years
Your Rank - 3rd Percentile
3. Ratio of Minority Employees of the Minority Population of the Service Area
Your Rank - 3rd Percentile
4. % of Full-Time, First-Time Students that Transferred in Six Years
Your Rank - 3rd Percentile

Next Steps — Peer Comparisons

The NCCBP On-Line Peer Comparison Tool allows you to compare your results to similar community colleges. Please contact us if you would like assistance using this tool.

More Information

Thank you for being an NCCBP member. Find more information on the NCCBP by visiting our website NCCBP.org or by calling or emailing the Benchmark Institute.

Your research office will be able to provide additional benchmarks from the research, including peer comparisons.

A new feature in the NCCBP reports this year is the capability for each institution to design custom reports. This feature gives access to your institution's trend data for the years it was a member from 2007 to 2016.

To view reports online, go to NCCBP.org/reports and log in.

Dr. Lou Guthrie, Director
National Higher Education
Benchmarking Institute

Johnson County Community College
12345 College Blvd.
Overland Park, KS 66210
913-469-8500 Ext. 4019
E-mail: louguthrie@jccc.edu
Twitter: [@EdBenchmark](https://twitter.com/EdBenchmark)

