



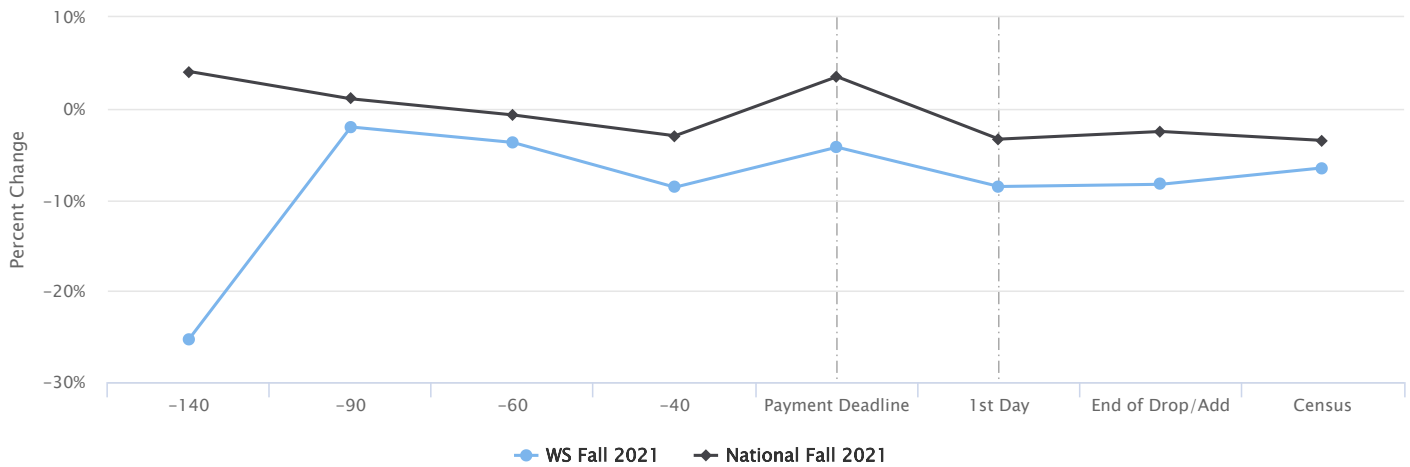
Executive Report for Dr. Tony Miksa

WALTERS STATE COMMUNITY COLLEGE

Key National Benchmarks – Where Does Your Institution Stand?

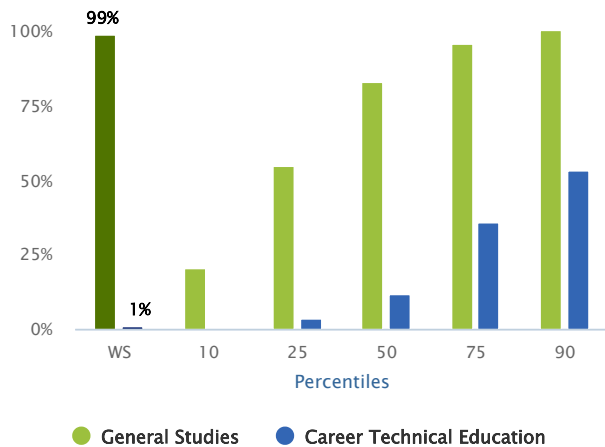
Thank you for participating in the National Community College Benchmark Project in 2021. This year’s report selects a few key data for your institution compared to the national benchmarks, including newly added data showing your Fall 2021 enrollment against national trends. The full NCCBP report, available online, contains more than 150 additional benchmarks, which are collectively intended to support your planning, assessment, peer comparisons and strategic decision-making activities.

Enrolled Student Credit Hours (SCH) by Days from Census – Percent Change

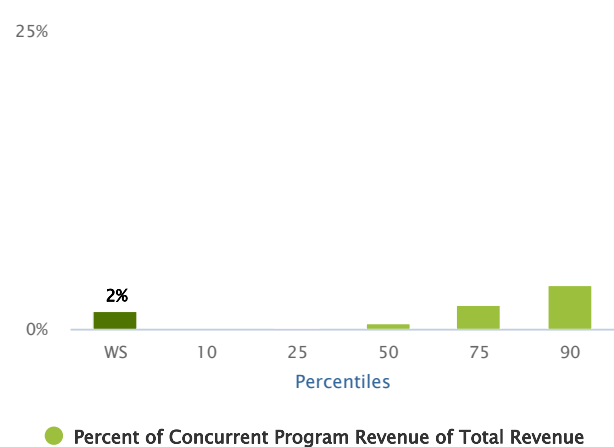


The percentage change of student credit hours between Fall 2020 enrollment compared to Fall 2021 enrollment over the period of 140 days prior to and throughout until the college’s census day.

Percentage of High School Concurrent Program Student Credit Hours



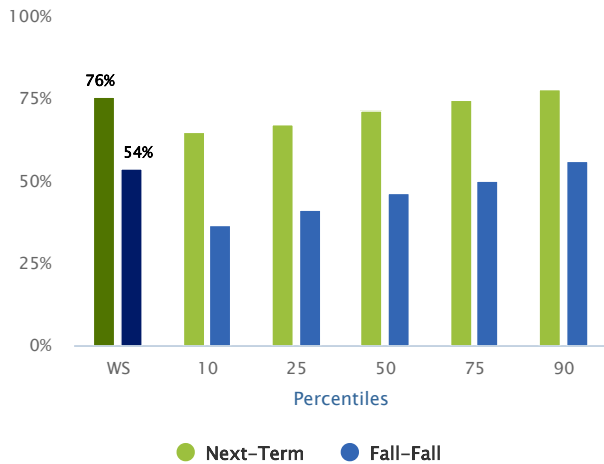
Percent of Concurrent Program Revenue of Total Institution Revenue



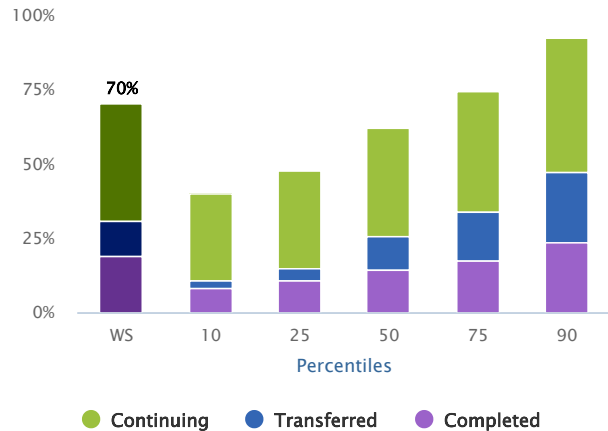
The percentage of concurrent high school student credit hours in general studies and career technical education for Fall 2019.

The percentage of concurrent high school program revenue from Fall 2019 of total revenue from Fiscal Year 2020.

Persistence Rate



Student Completions/Transfers/Continuing



The persistence rate is the percent of Fall 2019 credit students, both full- and part-time, who return to the campus for the next term (usually Spring 2020), or for the next Fall term (Fall 2020). This metric excludes students who graduated or completed certificates in the time frame.

Percent of all students in Academic Year 2019-2020 who complete, transferred or continue at the college the following year.

Strengths

The following benchmarks are where your community college performed at its best. The benchmark is followed by the percent rank for your institution.

- Return on Net Assets Ratio
Your Rank - >99th Percentile
- Concurrent High School Program Retention Rate
Your Rank - 98th Percentile
- % of Students that Completed a Career Program and are Employed in Related Field
Your Rank - 97th Percentile
- % of Employers Satisfied with Career Program Completers Preparation
Your Rank - 97th Percentile
- Net Operating Revenue Ratio
Your Rank - 95th Percentile

Opportunities for Improvement

The following benchmarks are where your community college may need improvement. The benchmark is followed by the percent rank for your institution.

- % Part-Time, First-Time Students that Completed or Transferred in Six Years
Your Rank - 3rd Percentile
- % of Grievance Action of Total Employees
Your Rank - 89th Percentile (Low is better)
- Primary Reserve Ratio
Your Rank - 11th Percentile
- % of Part-Time, First-Time Students that Completed in Six Years
Your Rank - 12th Percentile

More Information

Find more information on the NCCBP by visiting our website **NCCBP.org** or by calling or emailing the Benchmark Institute.

Johnson County Community College
12345 College Blvd.
Overland Park, KS 66210
913-469-3831
E-mail: michelletaylor@jccc.edu
Twitter: [@EdBenchmark](https://twitter.com/EdBenchmark)

